

# FUJI DRI-CHEM SLIDE Pre-Surgical S-Panel

Date of issue: 1/Sep/2013

(TP,ALP,GLU,GPT/ALT,CRE,BUN)

## [Warnings and precautions]

1. Only the required number of S-Panel packages should be taken out of the refrigerator and warmed up to room temperature before opening the individual packages.
2. Do not damage a package of dry silica gel and the binding tape, when you open the S-Panel package especially with scissors.
3. A new package must be used for each measurement. Do not reuse.
4. Use immediately after opening the S-panel package.
5. Do not use slides that fell on the floor as it could be contaminated.
6. Do not touch either the center part of the surface or the back of the slide.
7. Do not use the slide if the individual package is damaged.
8. Keep QC card away from magnetic materials.
9. Handle all patient specimens, control serum and used tips carefully as biohazardous samples. Wear proper gloves, glasses and other protective gear for your safety.
10. Used slides are categorized as infectious waste. Make sure to dispose them in accordance with the Waste Disposal Law and other related regulations, which prescribe the proper method of disposal, such as incineration, melting, sterilization or disinfection.
11. Make sure to dispose dry silica gel in accordance with the Waste Disposal Law and other related regulations.

## [Additional special equipment]

Analyzer: FUJI DRI-CHEM ANALYZER

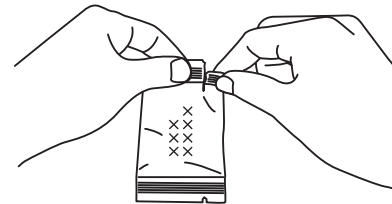
Other implements: FUJI DRI-CHEM QC CARD (attached)

: FUJI AUTO TIPS

: FUJI HEPARIN/PLAIN TUBE or Blood collection tube specified in the "INSTRUCTION MANUAL" for FUJI DRI-CHEM ANALYZER

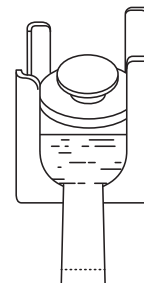
## [Procedure]

1. Unwrap the package. Be sure to open gently from "V shaped" notch as shown in the figure. Do not rip the included pack of dry silica gel.

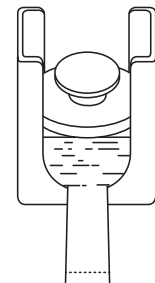


2. Take out slides from package. Do not touch either the center part of the surface or the back of the slide.

&lt;FDC7000&gt;

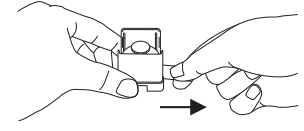
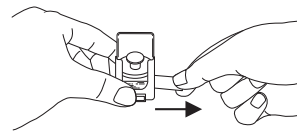


&lt;FDC4000,NX500&gt;



3. Place slides to be tested, barcode surface down, in the slide cartridge. Be sure to place an edge of the binding tape on the outside of the slide cartridge as shown in the figure.

4. Be sure to put the slide weight on top of the stacked slides.



5. Hold an edge of the binding tape. Pull out and remove the binding tape from the slide cartridge.

6. Make sure the binding tape is removed completely from the slide cartridge.
7. Place the slide cartridge on the analyzer.
8. Read in the new QC-card when you switch to a new box of slides.
9. Set a sample tube in the specified sample rack.
10. Input a sequence No. and a sample ID if appropriate.
11. Press the "START" key to initiate testing. For further details of operation procedure, consult "INSTRUCTION MANUAL" for FUJI DRI-CHEM ANALYZER.

## [Storage and shelf life]

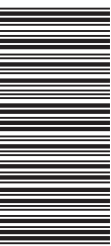
1. Storage: This product must be stored between 2-8°C(35.6-46.4°F) before use.
2. Expiry date is printed on the carton and the individual packages.

## [Contents]

Slide: 12 Panels/6 Slides per Panel  
 QC card: 1  
 Desiccant: 1 silical gel pack per Panel

## [Other Information]

Please refer to the Instructions for Use for Comprehensive S-Panel.

Pre-Surgical  
S-Panel